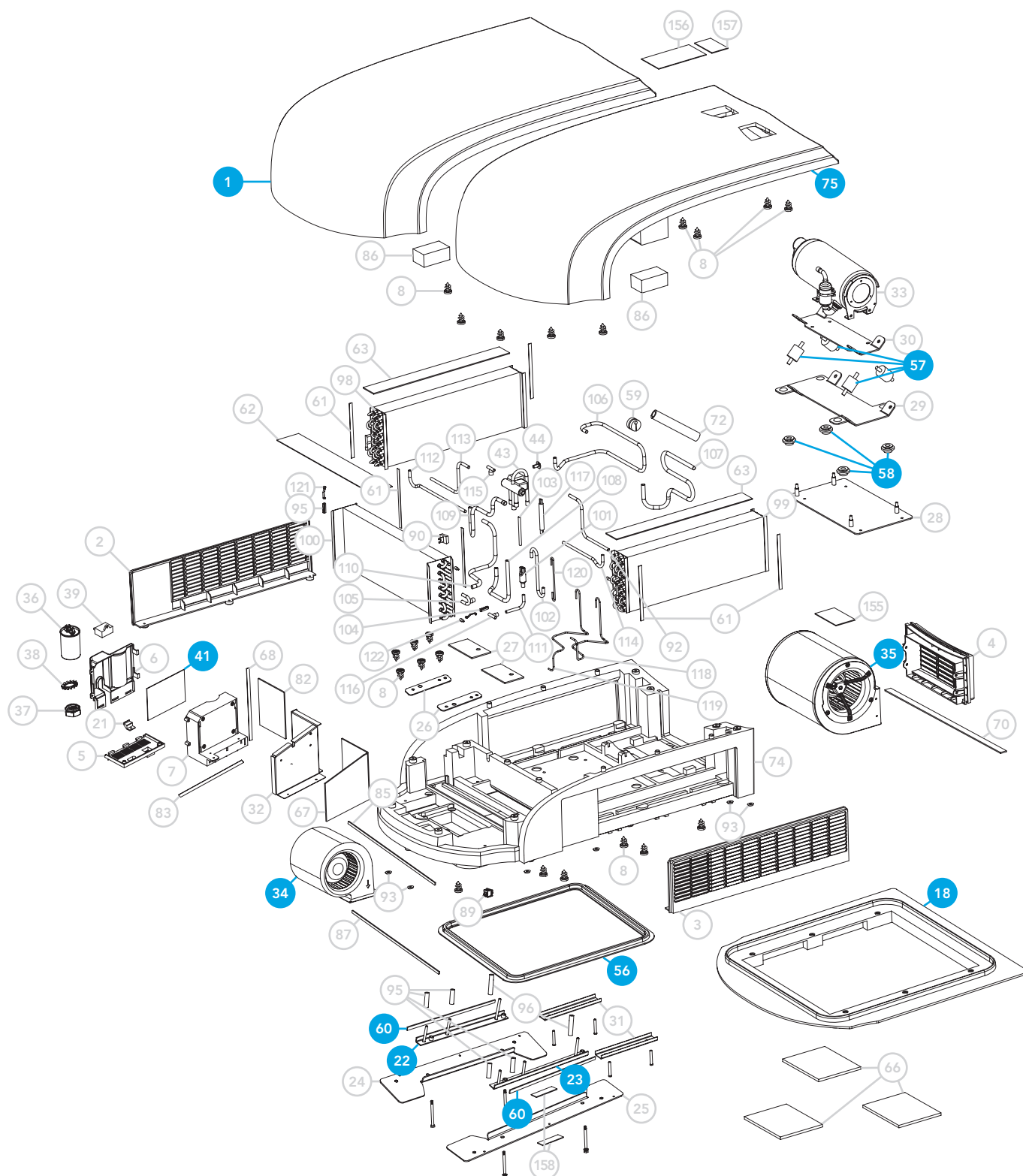


Spare parts

RTA-1700L & RTA-2500L series

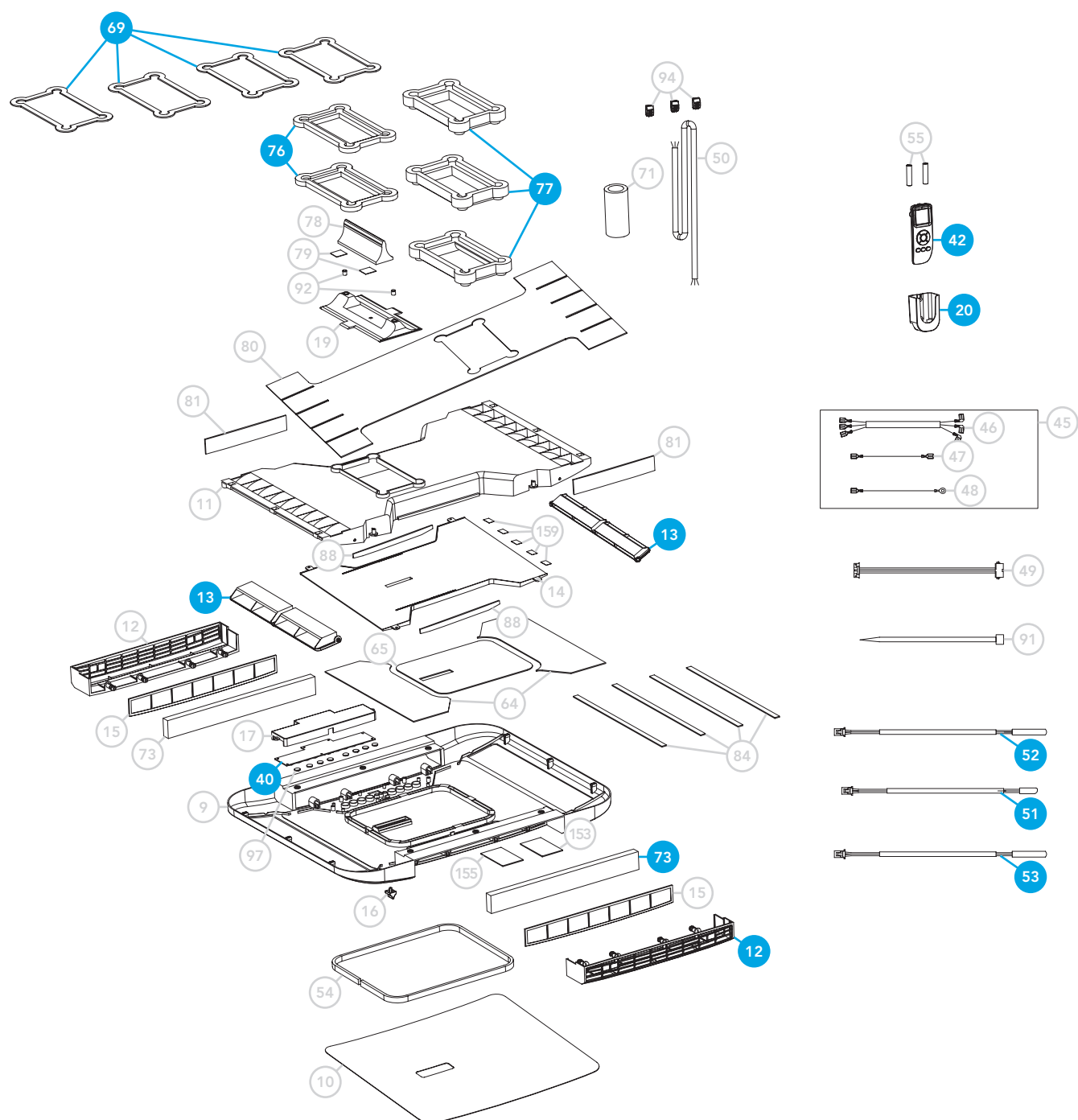
Part no.	Article no.	Description
Outdoor unit		
18	1504370	Mestic mounting adapter outdoor unit for RTA-1700L/2500L
34	1504490	Mestic indoor fan for RTA-1700L/2500L
35	1504540	Mestic outdoor fan for RTA-2500L
35	1504530	Mestic outdoor fan for RTA-1700L
41	1504560	Mestic circuit board for RTA-1700L/2500L
56	1504670	Mestic rubber seal for RTA-1700L/2500L
57	1504680	Mestic vibration pad compressor for RTA-1700L/2500L
58	1504690	Mestic buffer pad compressor for RTA-1700L/2500L
1 + 75	1504330	Mestic top cover for RTA-1700L/2500L white
22 + 60	1504440	Mestic left mounting strip and foam strip for RTA-1700L/2500L
23 + 60	1504390	Mestic right mounting strip and foam strip for RTA-1700L/2500L
Indoor unit		
12	1504350	Mestic air inlet grille by RTA-1700L/2500L
13	1504360	Mestic air deflector for RTA-1700L/2500L
20	1504380	Mestic wall holder remote control for RTA-1700L/2500L
40	1504550	Mestic electric control display for RTA-1700L/2500L
42	1504570	Mestic remote control for RTA-1700L/2500L
51	1504640	Mestic temperature sensor for RTA-1700L/2500L
52	1504650	Mestic tube temperature sensor for RTA-1700L/2500L
53	1504660	Mestic defrost sensor for RTA-1700L/2500L
69	1504730	Mestic foam ring filling piece for RTA-1700L/2500L 4mm
73	1504740	Mestic filter for RTA-1700L/2500L
76	1504900	Mestic filling piece for RTA-1700L/2500L 20mm
77	1504910	Mestic filling piece for RTA-1700L/2500L 30mm
Complete indoor unit		
9 + 10 + 12 + 15 + 17 + 40 + 54 + 73 + 84 + 97	1504930	Mestic cover indoor unit for RTA-1700L/2500L
11 + 13 + 14 + 16 + 19 + 64 + 65 + 78 + 79 + 80 + 81 + 88 + 92	1504940	Mestic internal air distributor for RTA-1700L/2500L

Rooftop air conditioner RTA-1700L & RTA-2500L series outdoor unit

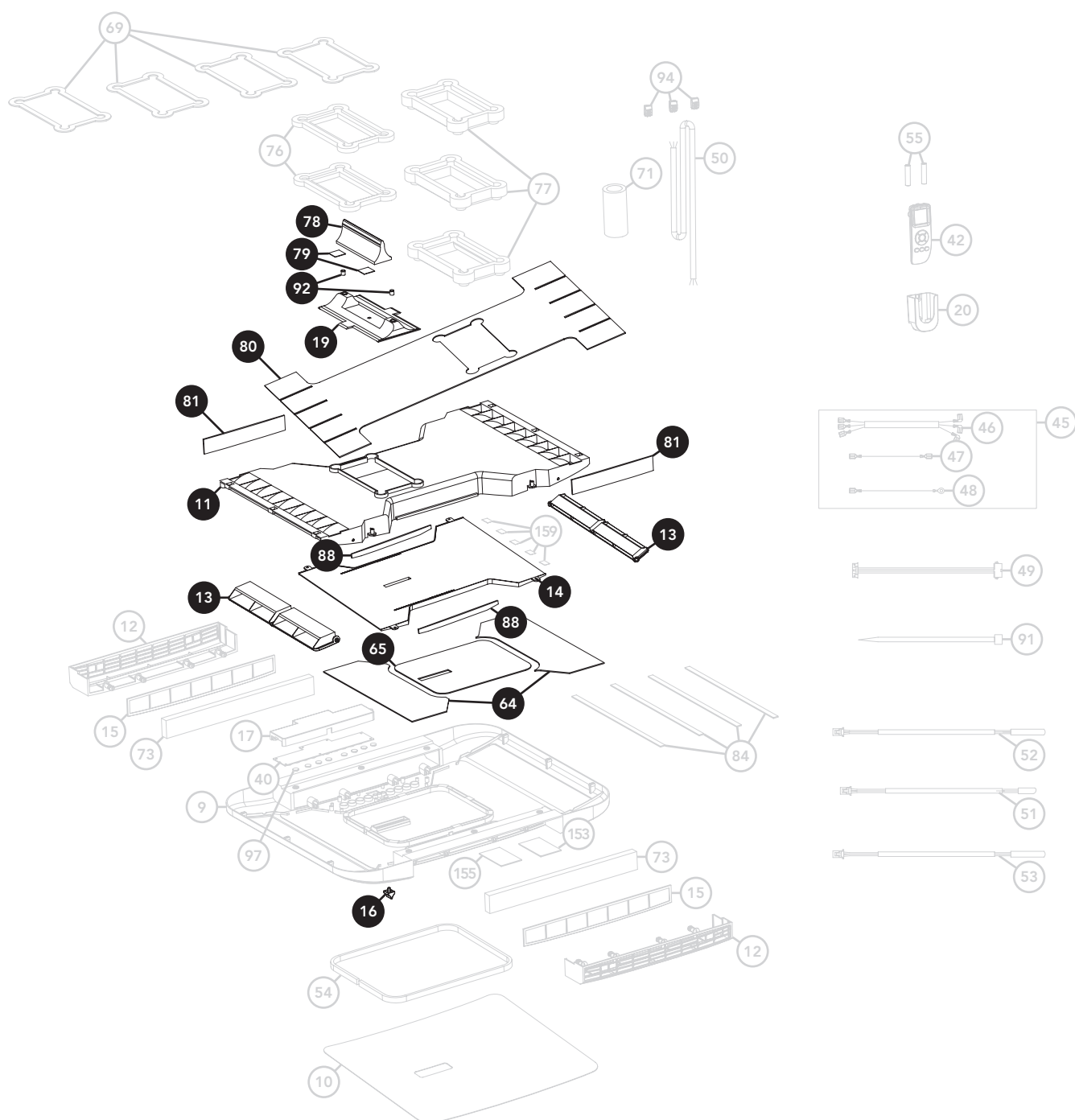


 Note: Only the parts with a blue number are available from stock.

Rooftop air conditioner RTA-1700L & RTA-2500L series indoor unit

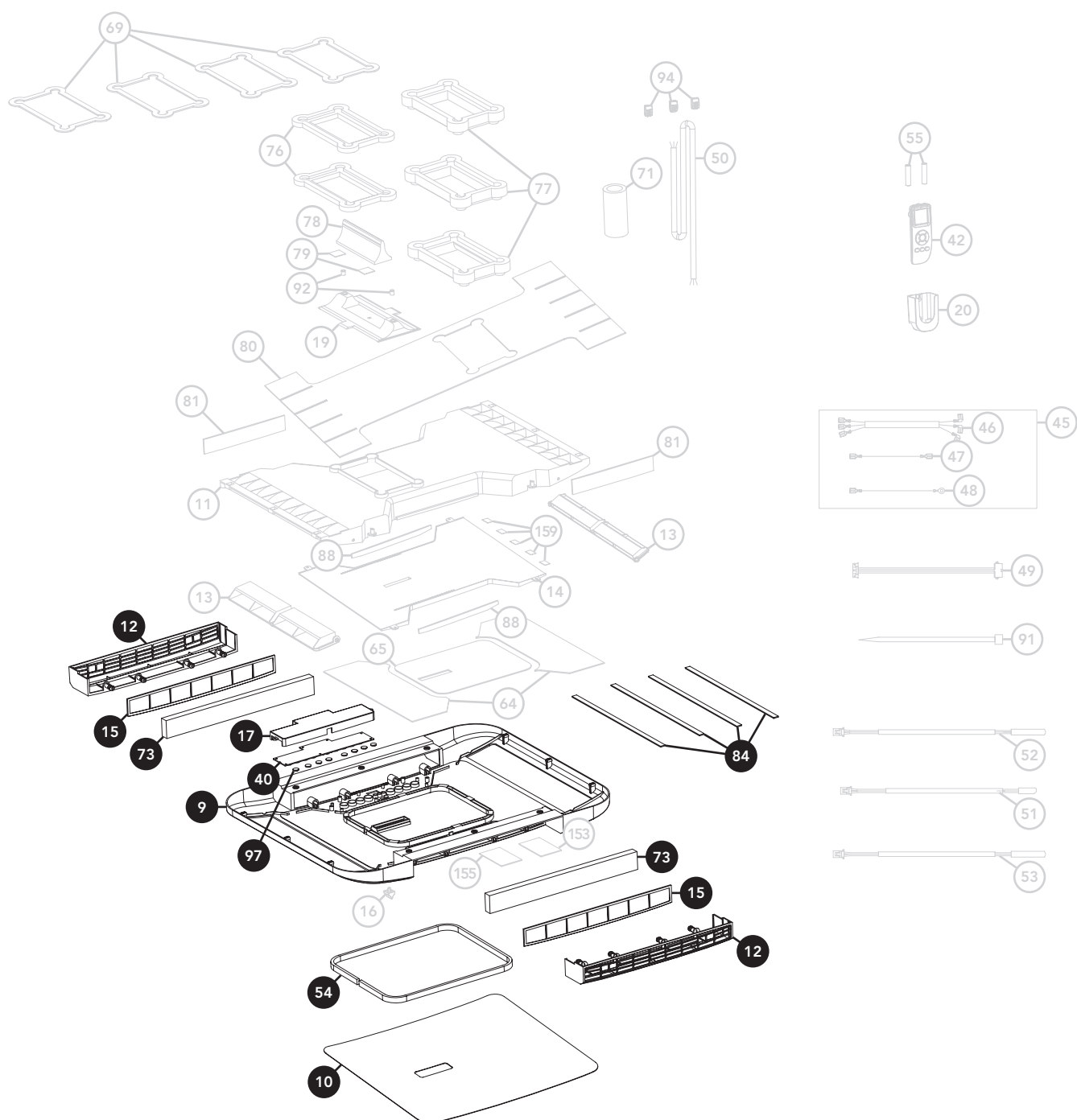


Rooftop air conditioner RTA-1700L & RTA-2500L series internal air distributor



The internal air distributor is available as a complete spare part under item number 1504940 and consists of the following components: 11, 13, 14, 16, 19, 64, 65, 78, 79, 80, 81, 88, and 92.

Rooftop air conditioner RTA-1700L & RTA-2500L series indoor unit cover



The indoor unit cover is available as a complete spare part under item number 1504930 and consists of the following components: 9, 10, 12, 15, 17, 40, 54, 73, 84, and 97.